

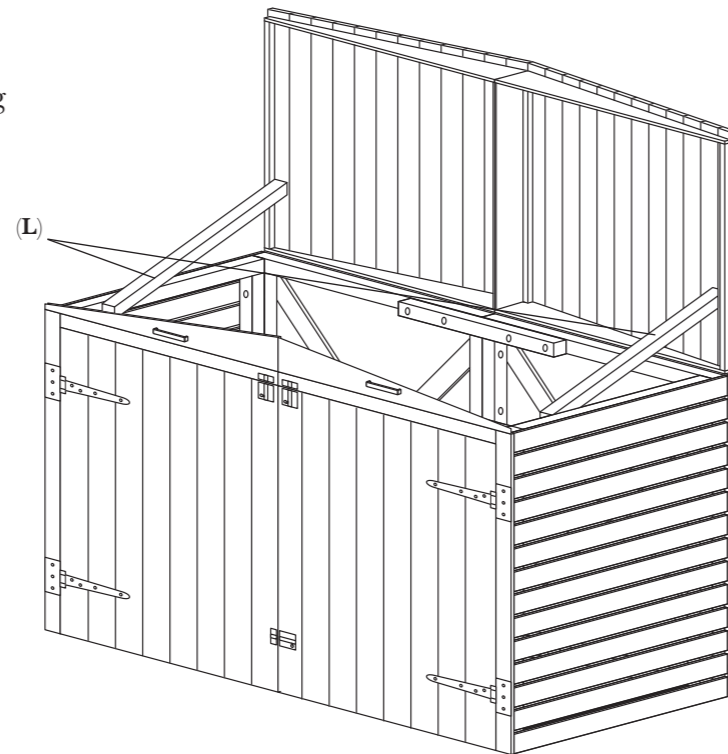
680002


WOODSHAW
 CRAFTED FOR YOUR OUTDOOR SPACE

680002

Diagram 8

- Fix lid supports (L) to the inside of the front of the assembly on both sides using 2 x fixings (1).



DOUBLE WHEELIE BIN STORE ASSEMBLY INSTRUCTIONS

Contents

Fixings

- (1) 6 x 60mm Woodscrews
- (2) 36 x 50mm Woodscrews
- (3) 38 x 25mm Woodscrews
- (4) 68 x 20mm Woodscrews
- (5) 4 x T Hinges
- (6) 3 x Door Bolts
- (7) 3 x Catches
- (8) 4 x Hinges
- (9) 2 x Handles

Components

- (A) 2 x Back Panels
- (B) 3 x 600mm Joining Rails
- (C) 2 x Side Panels
- (D) 2 x Front Fascia Side Slat
- (E) 2 x Front Base Rail
- (F) 1 x Front Joining Rail
- (G) 2 x Front Rails Top
- (H) 2 x Front Doors
- (I) 2 x Lid Front Panels
- (J) 4 x Lid Side Panels
- (K) 2 x Front Fascia Top Slats
- (L) 2 x Lid Supports
- (M) 2 x Lid

Tools Required

- Pozi drive screw driver
- Drill with 3mm drill bit

Before you start:

- It will take two people to assemble this product
- Check to make sure you have all of the parts listed above.
- Assemble in a clear, level area.
- Only tighten fully when all components are aligned in place
- Always site on firm, level ground
- Pre drill pilot holes with 3mm bit to avoid splitting

Care and Maintenance

Your new garden furniture is a natural timber product. In order that you may prolong the life of this product, we recommend that you follow the general care and maintenance advice below.

All fixings should be checked for tightness and signs of deterioration at the beginning of each season on a regular basis.

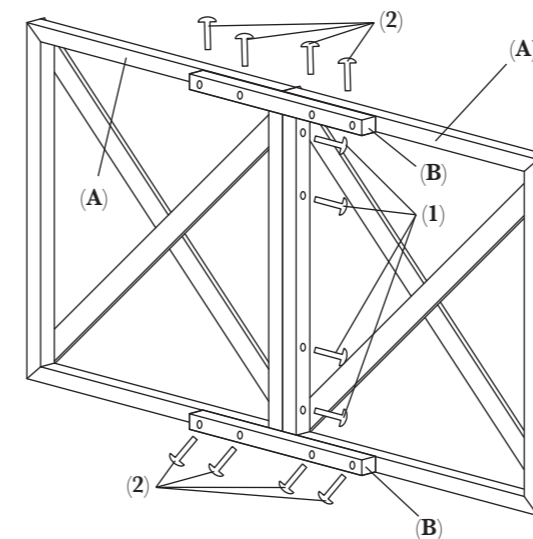
We recommend that this product is positioned on firm, level ground. If necessary, the product can be firmly fixed to the ground by using a proprietary ground anchor.

Product should be checked regularly, and re-coated with a suitable topcoat finish when required. If accidental damage occurs, lightly sand and re-coat with a suitable water based wood preservative. Product can be cleaned periodically with a mild soapy detergent. This is a natural product and therefore colour may vary slightly from piece to piece.

As a natural product, it is possible that knots can work loose and sometimes fall out. Resin leakage and small cracks may also appear on the wood's surface. Should this happen, clean the product of resin, ensure any sharp edges are sanded smooth and re-coat.

Products should be given suitable protection from adverse weather conditions, particularly during the winter months.

Please retain these instructions for future reference and use.

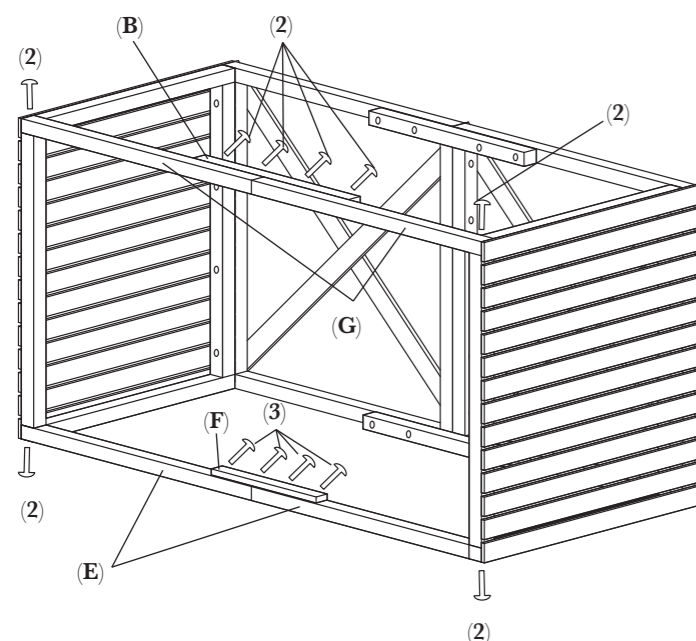
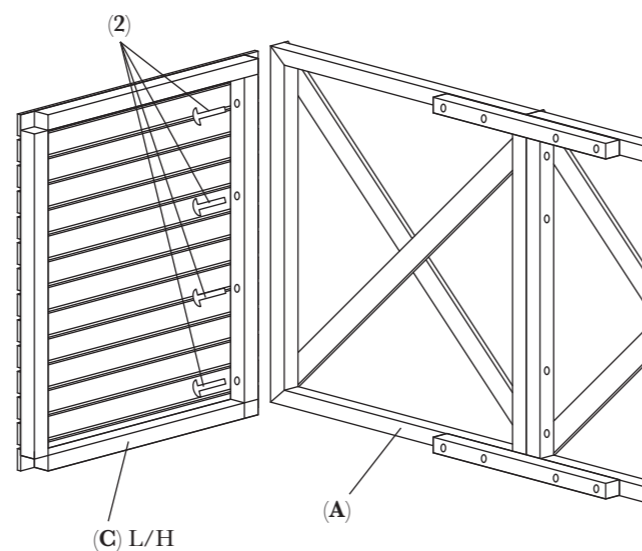

Diagram 1

- Fix 2 x back panels (A) together using 4 x fixings (1).
- Fix 2 x joining rails (B) to back panels (A) using 8 x fixings (2).


WOODSHAW
 CRAFTED FOR YOUR OUTDOOR SPACE

Diagram 2

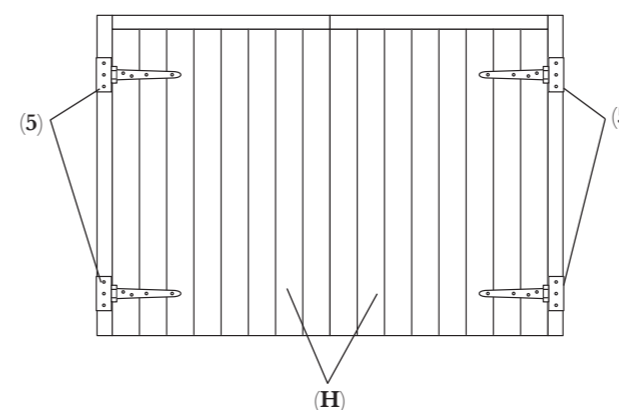
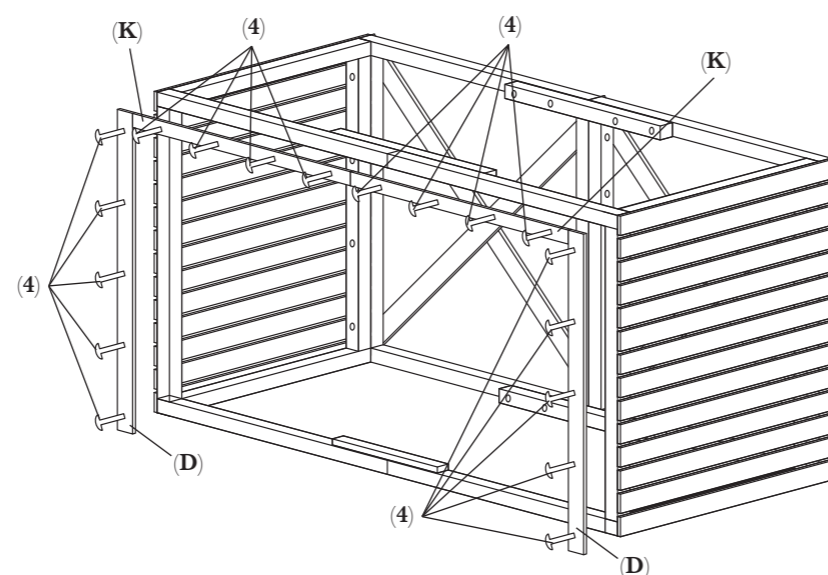
- Fix 2 x side panels (C) to back panels (A) using 8 x fixings (2).

**Diagram 3**

- Turn assembly with back panels on floor and fix front base rails (E) to side panels (C) using 2 x fixings (2).
- Fix front joining rail (F) to front base rails (E) using 4 x fixing (3).
- Turn assembly upright.
- Fix front rails top (G) to side panels (C) using 2 x fixings (2).
- Fix joining rail (B) to front top rails (G) using 4 x fixings (2).

Diagram 4

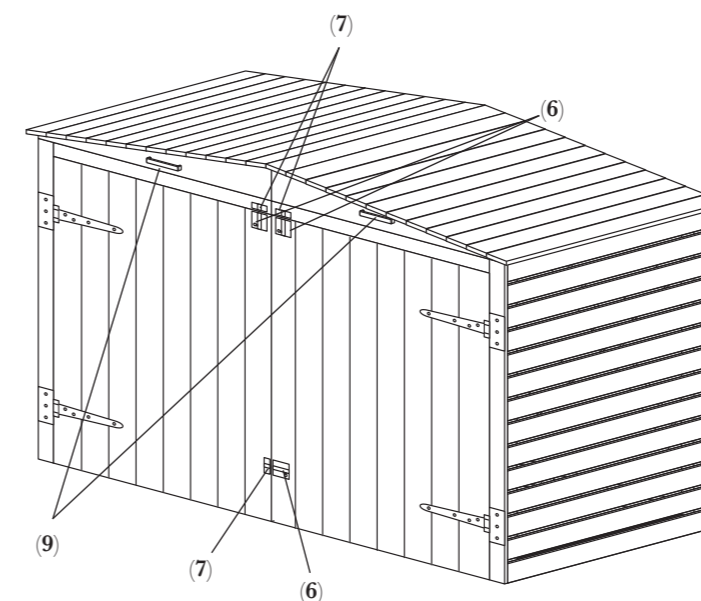
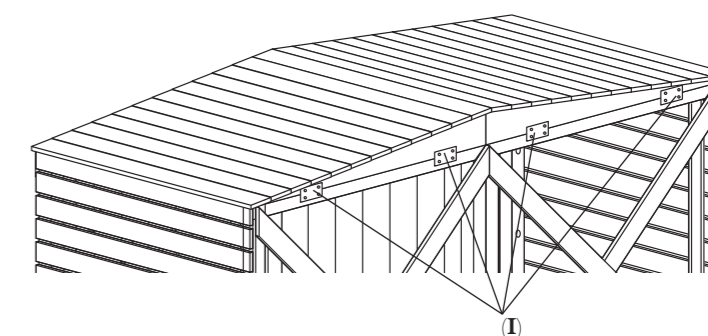
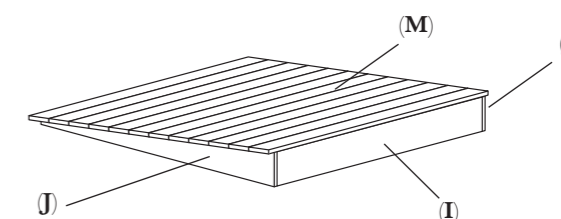
- Fit front fascia side slats (D) to front side panels (C) using 10 x fixings (4).
- Fix front fascia top slats top (K) to front of assembly using 8 x fixings (4).

**Diagram 5**

- Turn assembly on its back and fix 2 x 'T' hinges (5) to outside front door (H) in line with door braces on inside using 14 x fixings (4) and repeat for second door.

Diagram 6

- Fix left and right hand lid side panels (J) to lids (M) using 6 x fixings (2). Repeat for both lids.
- Fix lid front panels (I) to lids (M) using 5 x fixings (3). Repeat for both lids.
- Place lids on the assembly and at the back fix 2 x hinges (8) to each lid using 12 x fixings (3) per lid.

**Diagram 7**

- Fix 2 x door bolts (6) to top of doors (H) using 8 x fixings (4).
- Fix 2 x catches (7) to front of assembly in-line with door bolts using 4 x fixings (4).
- Fix 1 x door bolt (6) to one door using 4 x fixings (4) and fix 1 x catch (7) to the other door in-line with door bolt using 2 x fixings (4).
- Fix handles (9) to front of lids using 4 x fixings (4).